



Teleflex LV Monitor

Cable-monitor and fault location system

Benefits

- ▶ Fault location on live low voltage cables
- ▶ 3 phase cable monitor for a permanent check of current and voltage
- ▶ GSM remote controlled system



Description

The Teleflex LV Monitor has been designed for the location of all types of low voltage cable faults but especially the difficult and troublesome intermittent faults. It can be controlled locally from a portable PC by blue tooth or remotely over a telephone channel (GSM).

Unlike portable available TDR fault locators, the Teleflex LV Monitor is connected simultaneously to all 3 phases of a live LV cable to allow the local or remote operator to perform TDR testing on any combination of phases. Power for the Teleflex LV Monitor is taken through the 3 phase test lead and the unit requires at least 1 phase to be energised.

The Teleflex LV Monitor includes a 4 channel transient recorder (3 voltages and 1 current) which is used to acquire information about the exact nature and behaviour of inter-mittent faults. The signals acquired by the transient recorder are also used to detect "trigger" conditions for the TDR system based on voltage distortion and/or over-current. Recordings from 2 units can be used for fault location by transient travelling waves using a special synchronising feature.

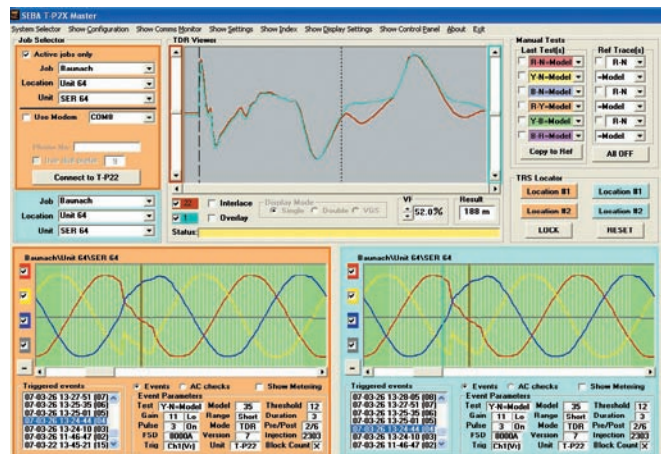
By providing total control from a remote location the Teleflex LV Monitor can be connected to a faulty cable by field staff who are not necessarily familiar with the analysis of TDR waveforms - the expertise in adjustment and interpretation being provided by a centrally located specialist. This becomes particularly beneficial when the equipment has to be left on-site awaiting the (re)-occurrence of an intermittent fault.

Scope of delivery

- ▶ Teleflex LV Monitor
- ▶ 3 phase fused test lead, CT clamp, GSM antenna
- ▶ CD with Software and user manual

Technical Data

Operational voltage / Power supply	115 / 230 V; 50 / 60 Hz
Interface	Bluetooth; GSM
Transient recorder	3 channel voltage 1 channel current
Data storage	20 events with 64 TDR traces; 10 cycles AC voltage waveform
Operating temperature	-10 °C ... + 40 °C
Dimensions	270 x 250 x 120 mm
Weight	2.8 kg



Computer Evaluation

Salient features

- ▶ TDR based three phase fault locating system
- ▶ Location of permanent, transient and intermittent faults
- ▶ Application on live low voltage cables
- ▶ Three phase voltage monitor
- ▶ Variable trigger conditions for voltage distortion and/or over current
- ▶ Data storage for 20 events
- ▶ Bluetooth and GSM remote control
- ▶ Easy to use operation software
- ▶ Safe connection with heavy duty fused test leads