

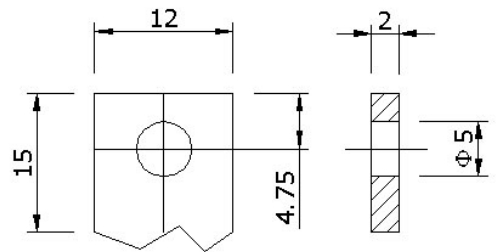
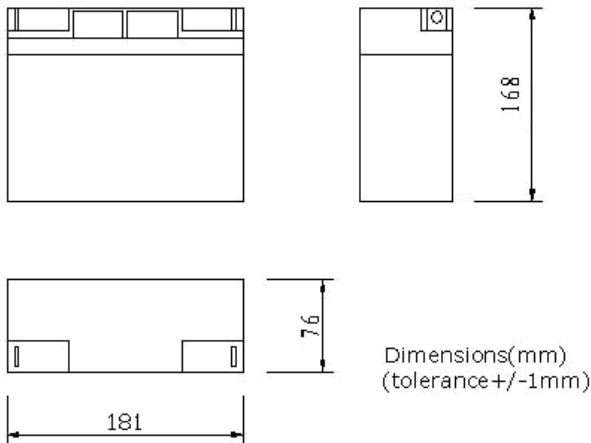
Model: CP17-12

PHYSICAL SPECIFICATION

Nominal Voltage		12V
Nominal Capacity (20HR)		17Ah
Dimension	Length	181±1mm (7.13 inches)
	Width	76±1mm (2.99 inches)
	Container Height	168±1mm (6.61 inches)
	Total Height	168±1mm (6.61 inches)
Weight		Approx. 5.05 Kg (11.13 lbs)
Standard Terminal		Bolt and nuts terminal Bolt Type:M5



B1(Bolt-and-nut terminal)
Bolt Type:M5



(in mm)

ELECTRICAL SPECIFICATION

Characteristics

Capacity	20 hour rate (0.85A)	17Ah
	10 hour rate (1.53A)	16Ah
	5 hour rate (2.89A)	14.5Ah
	3 hour rate (4.25A)	12.8Ah
	1hour rate (10.2A)	10.2Ah
Capacity affected by temperature	40°C (104 °F)	102%
	25°C (77 °F)	100%
	0°C (32 °F)	85%
Internal Resistance		Full charged battery (25°C, 77 °F) 15mΩ
Constant Voltage Charge	Cycle	Initial Charging Current less than 5.1A Voltage 14.4~15.0V at 25°C (77 °F) Temperature Coefficient -30mV/°C
	Standby	No limit on Initial Charging Current Voltage 13.5~13.8V at 25°C (77 °F) Temperature Coefficient -20mV/°C

Discharge curves @ 25°C (77 ° F)

