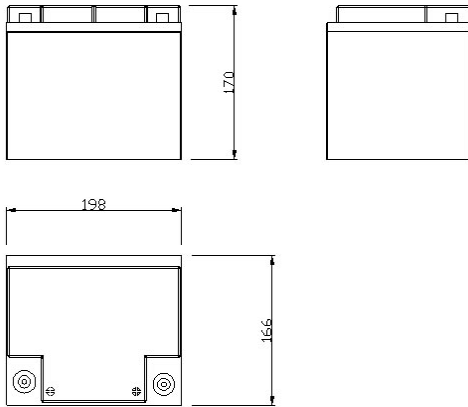


BATTERY LEAD ACID 12V 40A HW

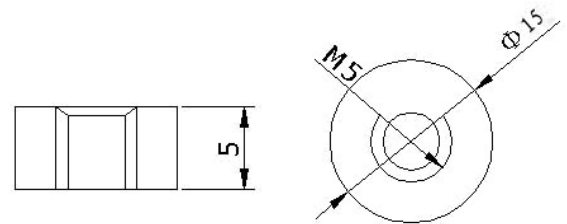
Model: CP40-12

PHYSICAL SPECIFICATION

Nominal Voltage		12V
Nominal Capacity (10HR)		40Ah
Dimension	Length	198±2mm (7.80 inches)
	Width	166±2mm (6.54 inches)
	Container Height	172±2mm (6.77 inches)
	Total Height	172±2mm (6.77 inches)
Weight		Approx. 13Kg (28.651lbs)
Standard Terminal		Bolt-and-nuts lead terminal Bolt Type: M5



Bolt-and-nut terminal
Bolt Type:M5



ELECTRICAL SPECIFICATION

Characteristics

Capacity	10 hour rate (4A)	40Ah
	5 hour rate (6.8A)	34Ah
	3 hour rate (10A)	30Ah
	1hour rate (24A)	24Ah
Capacity affected by temperature	40°C (104 °F)	102%
	25°C (77 °F)	100%
	0°C (32 °F)	85%
Internal Resistance		Full charged battery (25°C, 77 °F) 7mΩ
Constant Voltage Charge	Cycle	Initial Charging Current less than 10A Voltage 14.1~14.4V at 25°C (77 °F) Temperature Coefficient -30mV/°C
	Standby	No limit on Initial Charging Current Voltage 13.5~13.8V at 25°C (77 °F) Temperature Coefficient -20mV/°C

Discharge curves @ 25°C (77 ° F)

