

# WIRELESS HIGH PRECISION DIGITAL INDICATORS

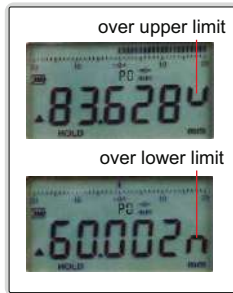
ATTENTION: RECHARGEABLE BATTERY,  
FOR 24 HOURS CONTINUOUS WORKING

LINEAR BALL BEARINGS  
FOR TEN MILLION TIMES USE

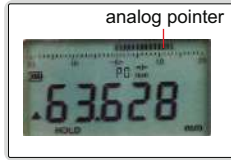
ABSOLUTE ENCODER, THE ORIGINAL  
DATA REMAINS AFTER POWER OFF

**INSPECTION  
CERTIFICATE**  
TRACEABLE TO NIST

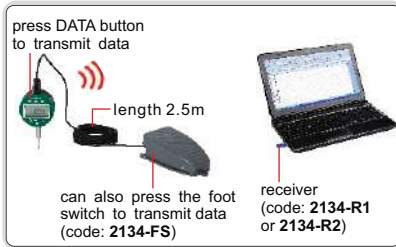
warning when  
over tolerance



analog pointer



Transmit data



2134-10



2134-25



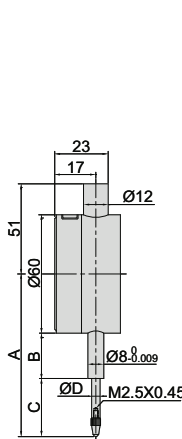
2134-50

- Built-in wireless transmission, ZigBee single
- Linear ball bearings for ten million times use
- Absolute encoder, the original data remains after power off
- Reading in digital and analog
- Button function: data output, tolerance, data preset, data hold, measuring direction change, max./min./TIR, power off time, on/off, mm/inch, adjust resolution
- Power: rechargeable battery, for 24 hours continuous working
- Optional accessory: contact points (page 161~163) foot switch, code: **2134-FS** wireless receiver, code: **2134-R1** (keyboard format) **2134-R2** (serial port format)

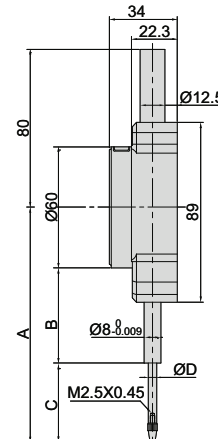
## Low precision

Carbide probe

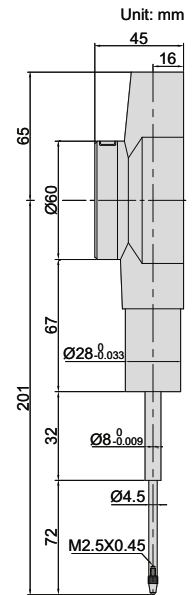
Adjustable resolution: 0.0005mm/0.00002"  
0.001mm/0.00005"  
0.01mm/0.0005"



2134-10  
2134-101



2134-25  
2134-251



2134-50

(mm)

Code	Range	Accuracy	Hysteresis	A	B	C	ØD	Remark
2134-10*	12.7mm/0.5"	3µm	1.5µm	75.4	20.6	24.8	5	flat back
2134-25*	25.4mm/1"	3µm	1.5µm	109.5	38.5	41	5	flat back
2134-50*	50.8mm/2"	3µm	1.5µm	—	—	—	—	flat back

## High precision

Ruby probe

Adjustable resolution: 0.0002mm/0.00001"  
0.001mm/0.00005"  
0.01mm/0.0005"

Code	Range	Accuracy	Hysteresis	A	B	C	ØD	Remark
2134-101*	12.7mm/0.5"	1.5µm	1µm	77.4	26	21.4	4	flat back
2134-251*	25.4mm/1"	1.8µm	1µm	116.1	42.5	44	4	flat back

(mm)

\* Supplied with manufacturer inspection certificate traceable to NIST USA

spindle lift knob is included



max./min./TIR

