

# ADJUSTABLE COEFFICIENT DIGITAL INDICATORS

- DISPLAY READING = COEFFICIENT X SPINDLE MOVEMENT.

The coefficient can be adjusted from 0 to 9.9999. For example, coefficient is 4.5562, spindle moves 3.60mm, display reading is  $4.5562 \times 3.60 = 16.40\text{mm}$

- Button function: on/off, zero, data preset, inch/mm, coefficient set, measuring direction change
- Keep preset data in memory after restart
- CR2032 battery, automatic power off
- Data output
- Optional accessory: data output cable (code 7315-, 7302-, 7305-), backs (page 129~130), contact points (page 126~128)

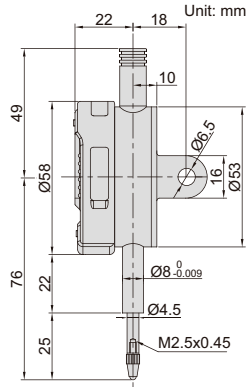
spindle lift knob is included



2501-10

DATA  
OUTPUT

**INSPECTION  
CERTIFICATE**  
TRACEABLE TO NIST



Code	Range	Resolution	Accuracy	Hysteresis	Remark
2501-10*	12.7mm/0.5"	0.01mm/0.0005"	20µm	10µm	lug back
2501-10F*	12.7mm/0.5"	0.01mm/0.0005"	20µm	10µm	flat back

\* Supplied with manufacturer inspection certificate traceable to NIST USA